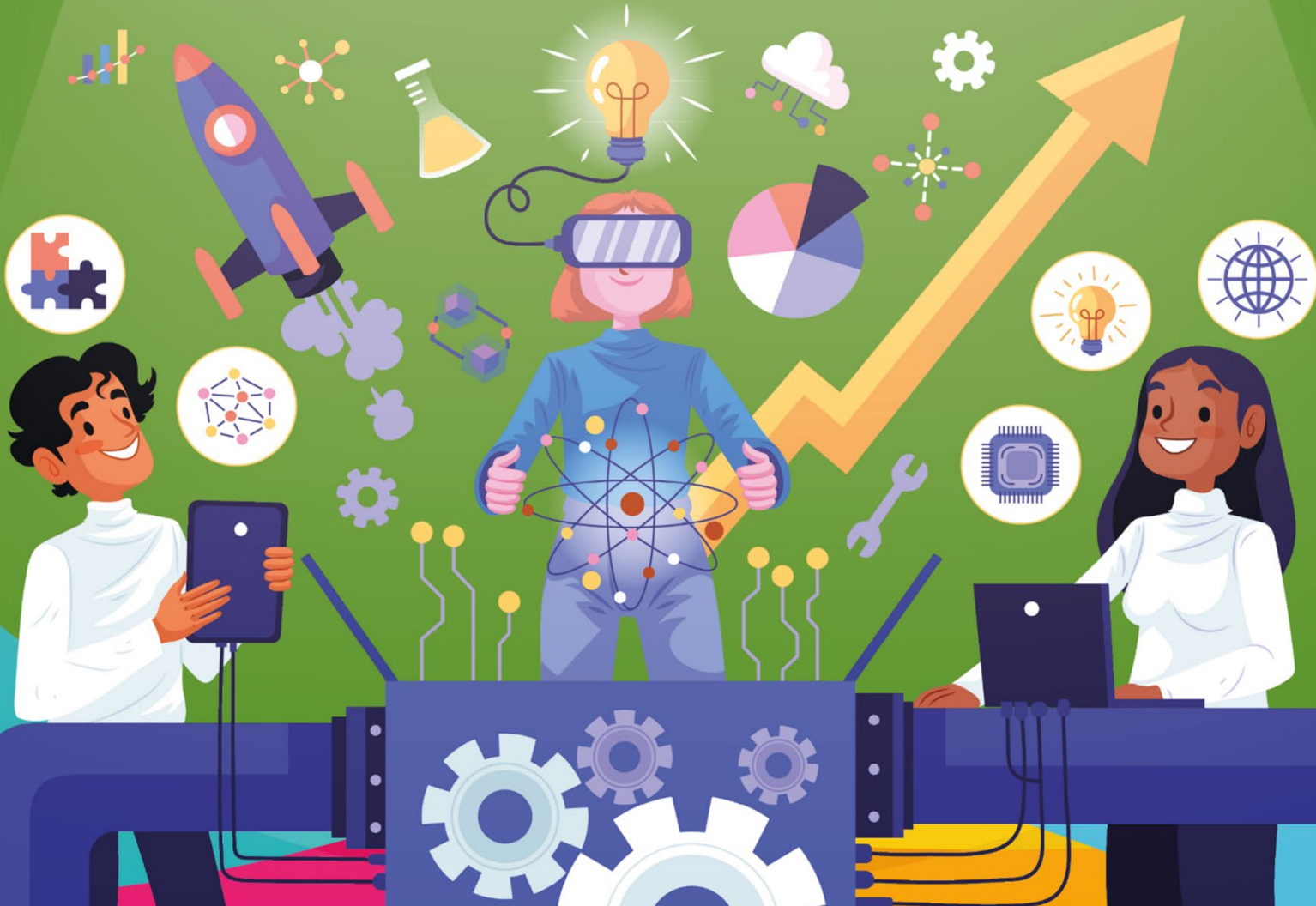




# Science Lab

# 6



## 7. Rising water

**Topic:** Heat and absorption

**Objective:** Students will observe how water is absorbed by heat and vacuum.

**Vocabulary:** bend, vacuum, absorb, heat

**Materials:**

- A glass cup
- A lighter
- A plate
- A match
- Some colour water
- A coin

### Development:

- **Read and look at the pictures.**

**Step 1.** Take the match and bend it in half. Place the match on the plate and use the coin to keep it standing in the middle – make sure the head of the match is facing up.

**Step 2.** Pour the colour water on the plate – just enough to cover the surface of the coin.

**Step 3.** Take the lighter and light the match and place the glass on top of the match.

**Step 4.** Observe how the water starts to rise inside the glass.

Step 1.



Step 2.

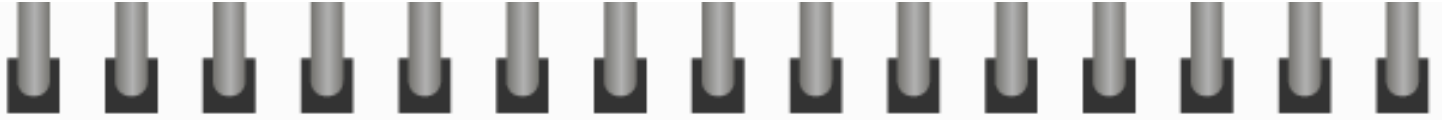


Step 3.



Step 4.





Tell us...

Look and read. Write the words on the lines.

0. to move from a lower position to a higher one

rise

heat

1. to take in or soak up by chemical or physical action

absorb

2. a flat, round piece of metal used as money

vacuum

3. a drinking container made of a transparent material

bend

4. to shape or force into a curve or angle

match

5. the quality of being hot; high temperature

6. a circular item to eat food from

coin

7. a short stick made of wood with a special substance that burns at one end

plate

8. the action of sucking up substances like dust, dirt or water

glass

Explain why the water went in.

---



---



---



---



---



Glue a picture of your project finished!

Rising water

Glue your  
picture here

:)

1. What was your favourite part of the project? \_\_\_\_\_.

2. What, exactly, did you like the most?  
\_\_\_\_\_.

3. Extra notes on what you observed during the project. \_\_\_\_\_  
\_\_\_\_\_  
\_\_\_\_\_.

4. Can you see or apply the information from the project in real life? YES / NO

Explain: \_\_\_\_\_  
\_\_\_\_\_.

5. Was it easy to get the materials for the project? YES / NO

Explain: \_\_\_\_\_  
\_\_\_\_\_.

